

Introducing

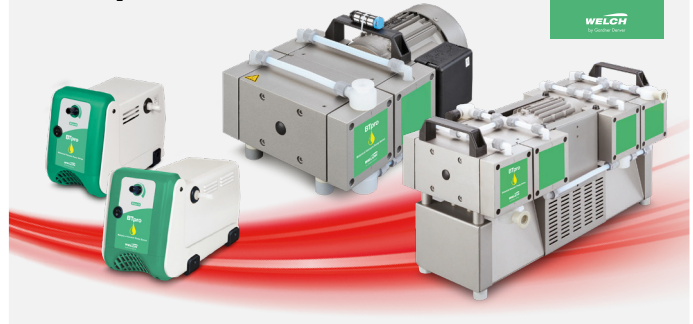
New Products, cUL Listed, from Welch® Vacuum designed to improve cannabis processing

Chemical Duty Diaphragm Pumps With Explosion Proof Motor



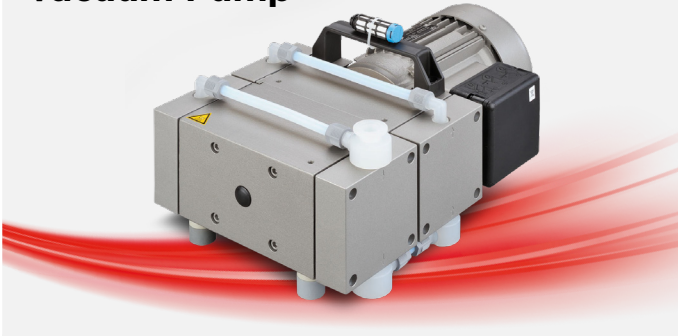
Models 2090W-01 & 2085W-01 with explosion proof motors, cUL listed, 115/230V, 60Hz, 1ph

BTpro Botanical Vacuum Pump Series



Models BTpro40 &170 with CSA listing; Models BTpro100 & 170 with cUL listing; 115V, 60Hz, 1Ph

High Capacity Dry Diaphragm Vacuum Pump



Models 2052B-01 and 2054B-01 in stock, cUL listing; 115V, 60Hz, 1Ph

Two-stage Rotary Vane Vacuum Pump



CRVpro48 with 39.4 CFM, CRVpro65 with 52.5 CFM/-5% (240-265)/(415-460)V +/-5% 60Hz 3P

Reliable and consistent results are paramount to your product's quality. Reduce down-time and unsafe conditions due to failed or troublesome equipment. The world famous Welch brand of laboratory vacuum pumps have been the preferred vacuum pump for prestigious research facilities through generations.

Your lab deserves
the best and gets it
with Welch

AMERICAS
Gardner Denver Thomas Inc.
1601 Feehanville Drive
Suite 550
Mt. Prospect, IL 60056
USA

Tel: +1 847 676 8800
welch.na@gardnerdenver.com

WELCH

www.welchvacuum.com

